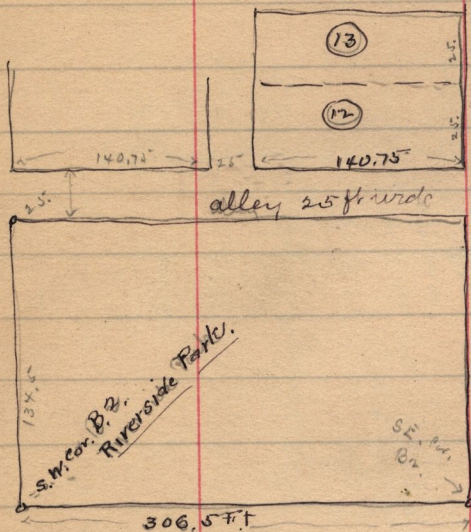


April 16-1898

Aaron Farr. ^{1. Pol}

Survey of Lots 12-13, B. 2,
Riverside Park Add.



April 27-98

31-81

Ja^s McFarland by Court to Robert McFarland.

Pt. S.E. 1/4 Sec. 15. T. 6. N. R. 2. W. Org. 903.1 ft E. of S.W. cor.
 of 1/4 - N 1320. ft to N line S 1/4 ed 1/4 - E 429.8 ft. S 1203.
 ft. - E. 845.6 ft - S 117. ft. W 1325. + ft to Org.

See page
55 this
Book

S.W. cor. S.E. 1/4 Sec. 15

76.2 ft. N. ^y

← 903.1

